

# Using multiple supply cassettes

## Xitron Navigator Technical Note

February 26, 1998

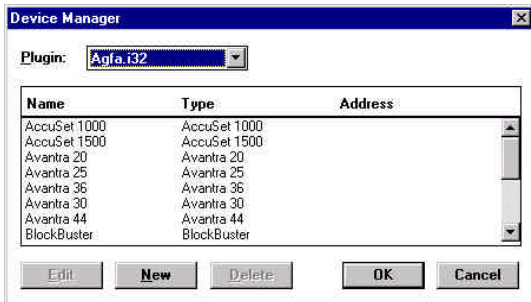
### Overview

The Harlequin core RIP assumes that the device that it is driving has only one input cassette. For this reason it will automatically pause, allowing cassettes to be manually changed, when a image is to be sent to a different cassette. This creates unwanted interruptions in workflow when a multi-cassette device (such as an Avantra 44) is being used.

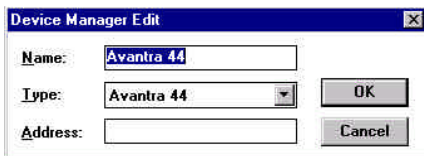
There is an easy way to overcome this assumption of the rip. The following procedures will describe how to setup two identical devices, each one will be the host of a specific cassette on the output device. Once these simple procedures are followed RIP function will proceed automatically and output will not be interrupted by changing cassettes.

**You should follow these steps carefully.**

In the Navigator RIP you will want to locate the Device Manager dialogue. This can be accessed from the Xitron RIP menu. The dialogue will look like the following illustration.

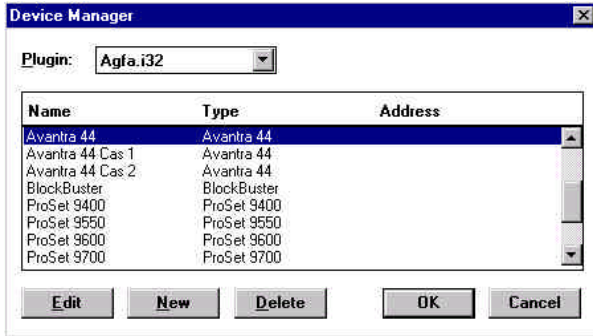


Select New. The following dialogue will appear. At this point, you will establish two independent devices of the same type. One device for each input cassette. If you have already created page setups in the RIP, **do not** rename the existing device. Doing this will delete your existing page setups.

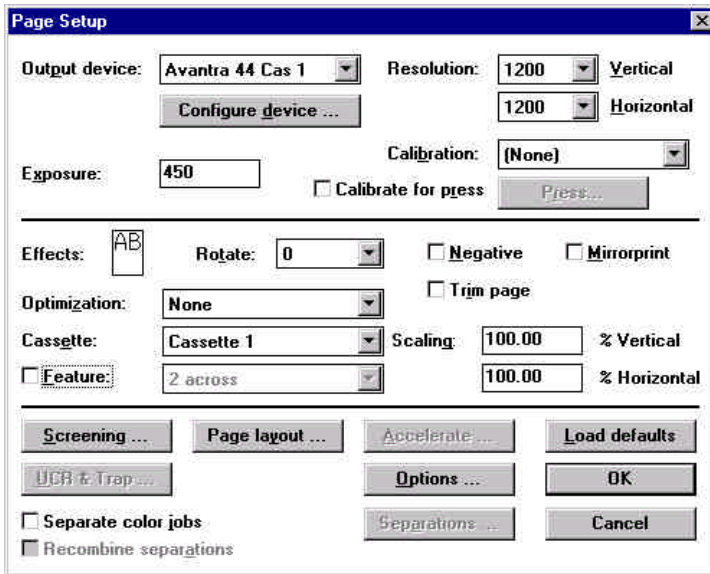


In the Type field, Be sure that the appropriate device type is selected. In the Name field type in a descriptive name for the device. For instance, "Avantra 44 Cassette 1" for the

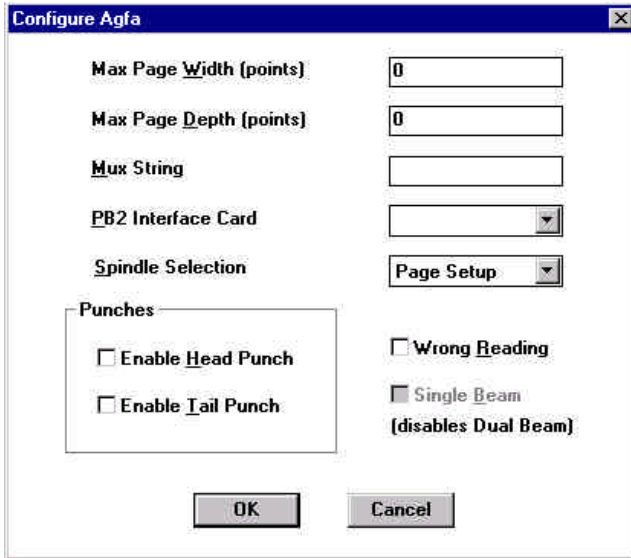
device that will control that cassette. After you have done this select OK and follow the same procedure to create a second device. In this example the second device is named “Avantra 44 Cassette 2.” The Configure Device dialogue should now contain these two new device definitions. It should look something like the example below.



If you have existing Page Setups, now is the time to change them. Otherwise, new Page Setups should be created using the new devices that you have just established. In the Output device window choose the new device making sure that it corresponds with the cassette that has been chosen in the Cassette window of the Page Setup. An example appears below.



To insure that the proper cassette information will be forwarded to the imagesetter it is important to select the proper spindle handling. This is found by pressing the Configure device button on the Page Setup dialogue. The following dialogue window will appear.



Spindle Selection should be set to “Page Setup” as it appears in the example above. At this point, you will create or change the rest of your Page Setups to reflect the cassette control function that has been established for the two different devices.

If all of the above steps have been followed the RIP will be able to change the input cassette automatically without user intervention or pauses in your work flow.