

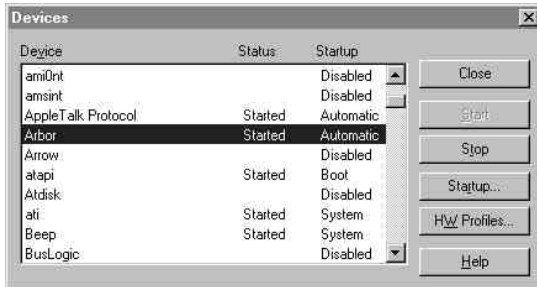
Preparing the RIP to Run at Startup

Xitron Navigator Technical Note

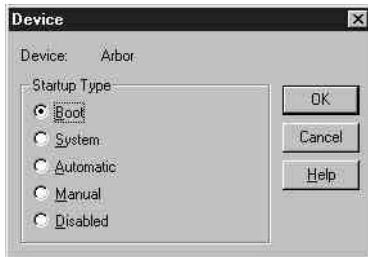
May 18, 1998

If you intend to have the RIP start up at when you first log into NT it is important to adjust the settings of the device drivers related to the RIP. This has to be done to ensure that the device drivers are loaded before the RIP attempts to start. The procedure is quite simple. Follow the instructions below.

1. After the RIP has been installed and the computer has been restarted, open the Control Panel and locate and open the “Devices” selection. Once in Devices you will see a screen like the one below.



2. You will have to locate three devices and change their startup properties. Locate the drivers and change their properties one at a time. The drivers are: Arbor, PB2Chug, and Sentinel.
3. To change the drivers properties, highlight the driver and press the “Startup...” button, you will see a window like the one below.



4. Change the setting to “Boot” and press OK.
5. Repeat this process with each of the three drivers: Arbor, PB2Chug, and Sentinel.
6. Once each of the drivers has been changed you can set the RIP to start up at boot by placing a Shortcut in the startup folder (consult Windows documentation for details).