

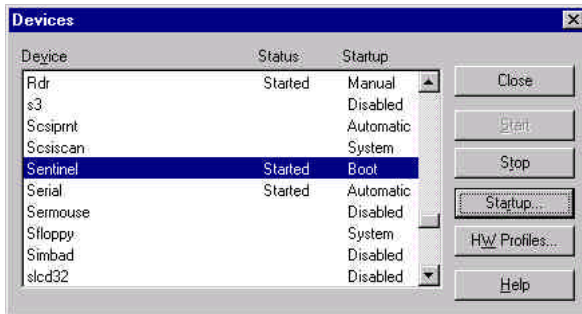
# Preparing SCSI RIPs to Run at Startup

## Xitron Navigator Technical Note

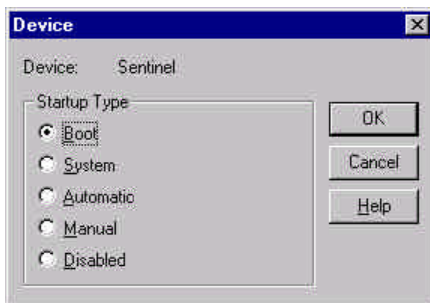
October 12, 1999

The following Tech. Note applies to RIPs that drive devices through a SCSI interface. Rips running with a two-card interface must use a different procedure (See Tech Note “preparing the RIP to Run at Startup”). If you intend to have the RIP start up when you first log into NT it is important to adjust the settings of the Sentinel device driver. This has to be done to ensure that the device driver is loaded before the RIP attempts to start. The procedure is quite simple. Follow the instructions below.

1. After the RIP has been installed and the computer has been restarted, open the Control Panel and locate and open the “Devices” selection. Once in Devices you will see a screen like the one below.



2. You will have to locate the Sentinel device and change its startup properties
3. To change the Sentinel properties, highlight the device and press the “Startup...” button, you will see a window like the one below.



4. Change the setting to “Boot” and press OK.
5. Once the Sentinel device has been changed you can set the RIP to start up at boot by placing a Shortcut in the startup folder (consult Windows documentation for details).