

Installing Xitron PCI cards on Windows 2000

September 21, 2000

Overview

This document describes how Xitron's PCI cards should be installed on a computer running Windows 2000 or later. If you are installing on Windows NT 4.0, this does not apply.

Bus Enumeration

When Windows 2000 boots it scans the PCI busses in the host computer for PCI devices. When it finds a device, it checks an internal database of devices and their device drivers. If the device is known, it checks the status of the driver. The driver may be installed and either enabled or disabled or the driver may have been removed during a previous sessions. If the driver is installed and enabled, Windows loads the driver for that device. Otherwise control will pass to the Hardware Wizard when the user first logs into the machine.

When the Hardware Wizard finds new (actually uninstalled) hardware, you will see a screen similar to:



Figure 1

After pressing "Next>" you will see the following dialog box:



Figure 2

You should select the first entry "Search for a suitable driver for my device (recommended)". You will then see the following dialog:

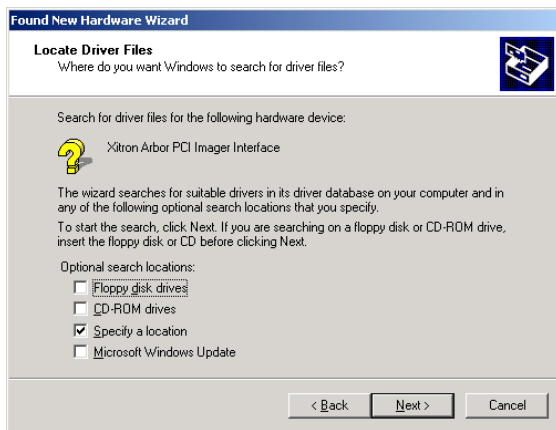


Figure 3

You should point at the location on the install CD or network where the oemsetup.inf file for the Xitron PCI card is located. On Xitron CDs this will typically be the directory "Inf" on the root of the CD. You should see the following screen, although the name of the PCI card may differ slightly:

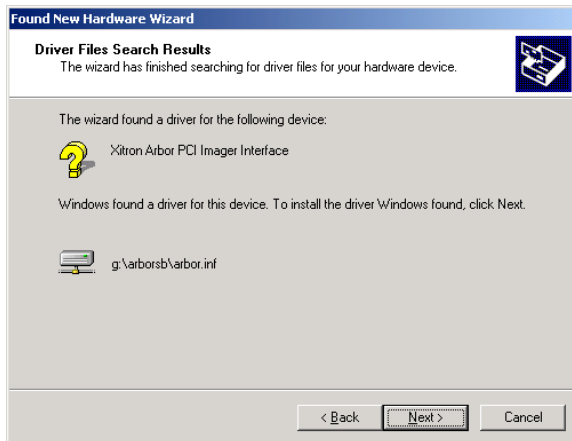


Figure 4

Finally, you will see:

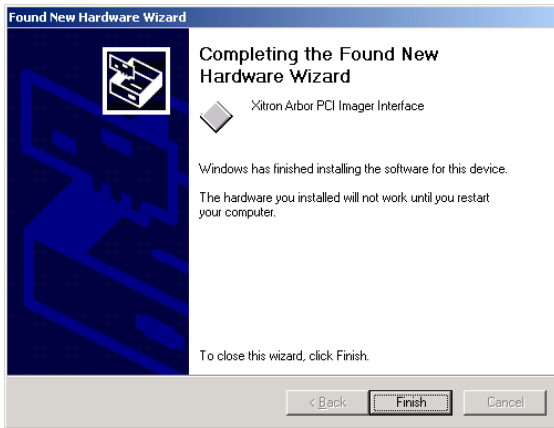


Figure 5

The system should be all ready and for our cards currently, you will have to reboot.

Deleting the Device

Removing the device from the system involves two steps: unlinking the device driver and hardware from the Windows database and physically removing the card from the system. Since Windows caches information about the device in an internal database the next time the hardware is discovered in the system, Windows will “know” about the hardware and offer/attempt (?) to install the driver for the device.

To remove the device right click on “My Computer”, select “Properties” and click on the “Hardware” tab. You will see this dialog:

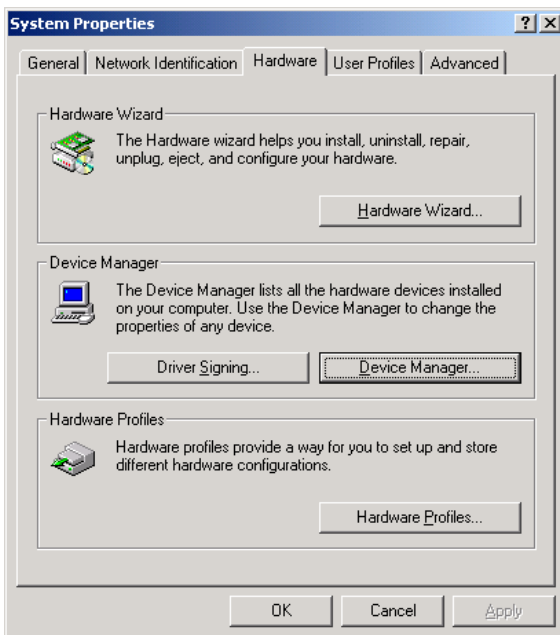


Figure 6

Click the button labeled “Hardware Wizard...” to start the Hardware Wizard. You should then step through the dialogs as shown below:



Figure 7

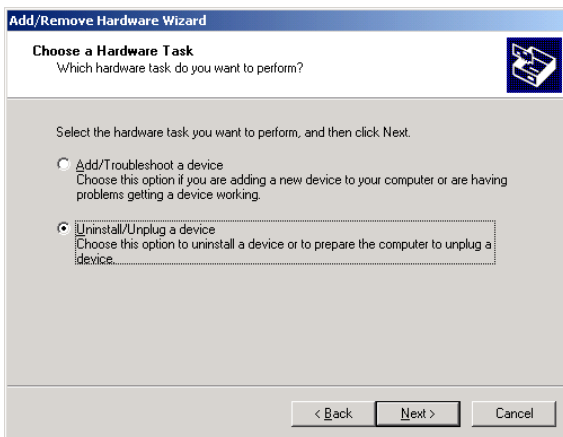


Figure 8

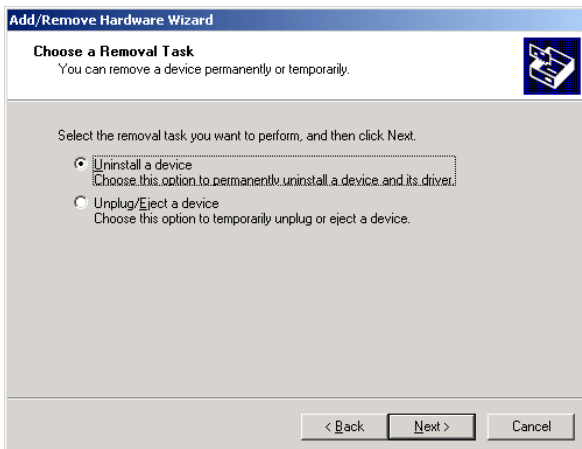


Figure 9

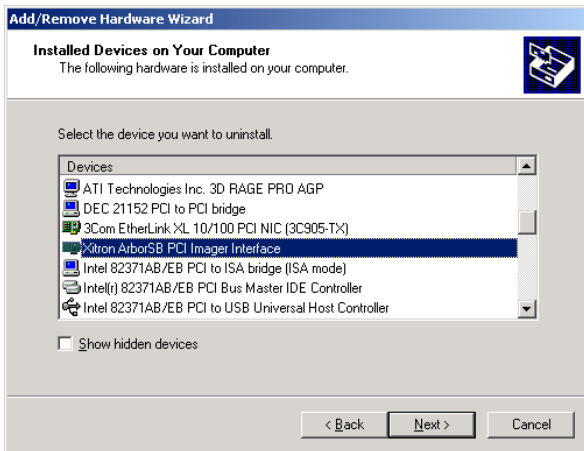


Figure 10

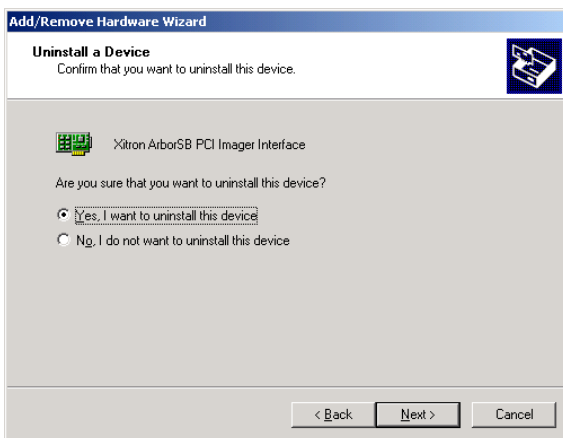


Figure 11

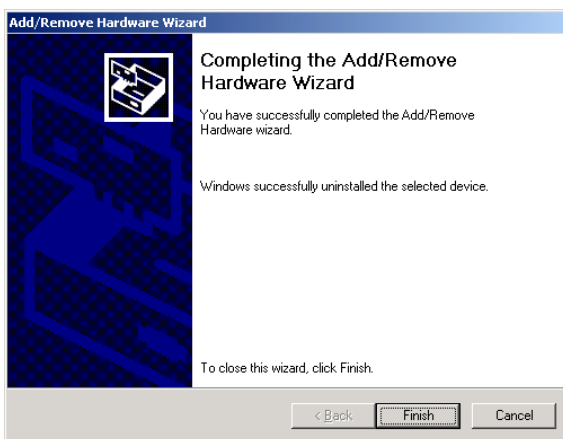


Figure 12

Reinstalling the Hardware

As mentioned before, Windows caches information about hardware that it has installed. In effect this means that Windows “knows” about third-party devices if they have been installed once. If you install a Xitron interface card, remove it from the system as described above and then later re-install it, the Hardware Wizard will automatically install the device in the system. The dialog showing this is shown here:

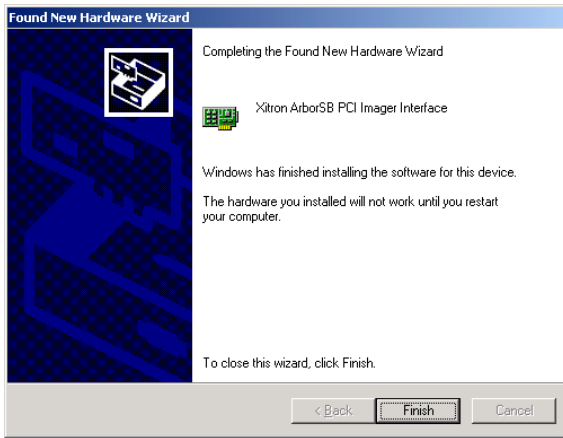


Figure 13

If you wish to do a “clean” install of the device, you must remove the oemsetup.inf file and its compile counterpart before re-installing the hardware. Since Windows renames these files this maybe a little tough. You may be able to remove the device, then re-install the device using the manual method of installation shown above.