



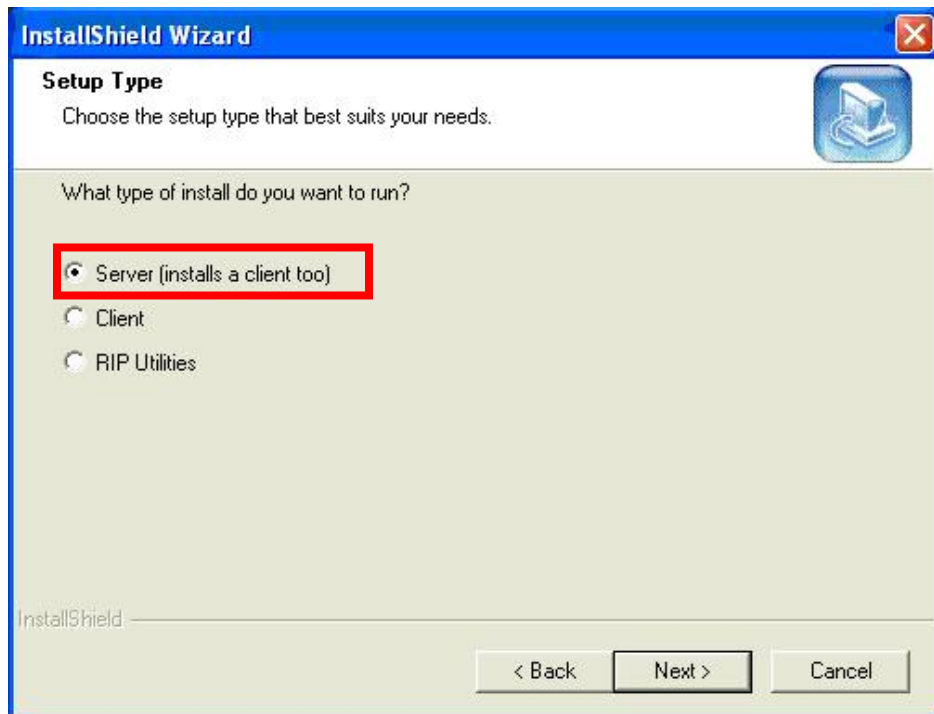
X MARKS THE SPOT WHERE IT ALL COMES TOGETHER.

TB06-003:

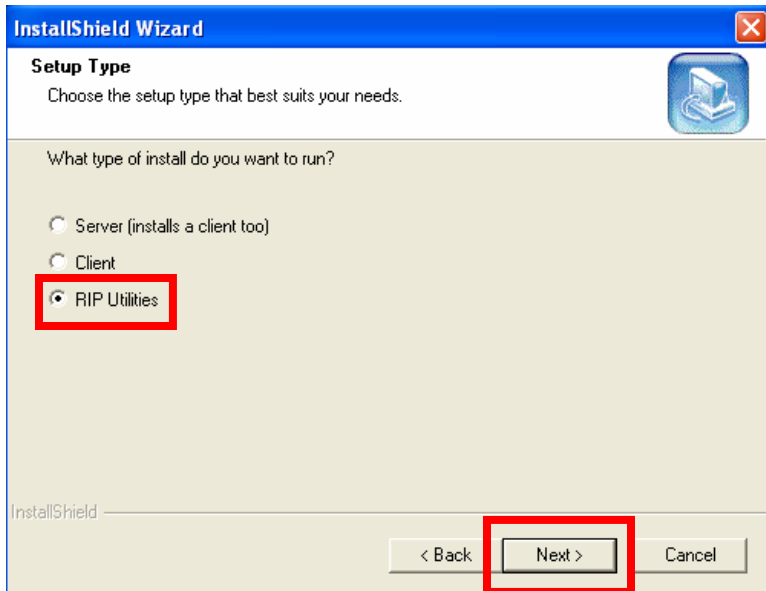
INSTALL PROCEDURE FOR MOMENTUM RIP 7.X & RIP MANAGER 3.1

It has been noted in recent installations that a specific procedure should be used when configuring Xitron's RIP Manager version 3.1 with the Presstek Momentum RIP. This procedure was developed from the standard Momentum Rip installation where the page buffers and workspace folder are installed on the D drive while the rest of the RIP components are installed on the C drive. This will typically happen when a DI or Dimension RIP is installed on the C drive. Failure to follow the procedure typically renders the installation inoperable. This bulletin explains the procedure in a step-by-step format.

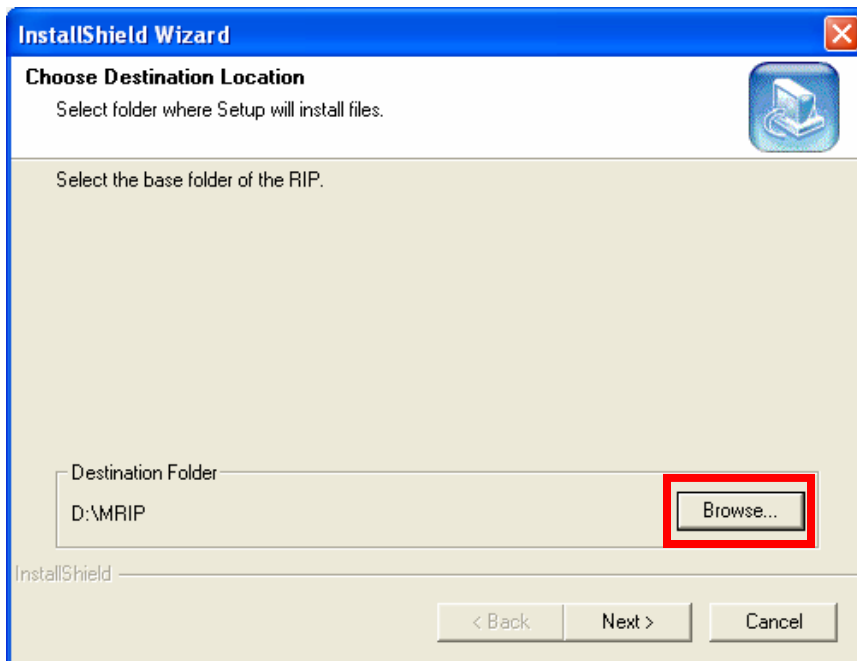
1. Install the Momentum RIP
2. Insert the Xitron RIP Manager install CD. The following install screen will appear. **Select** the button labeled "Server" and click **Next** to begin the installation.



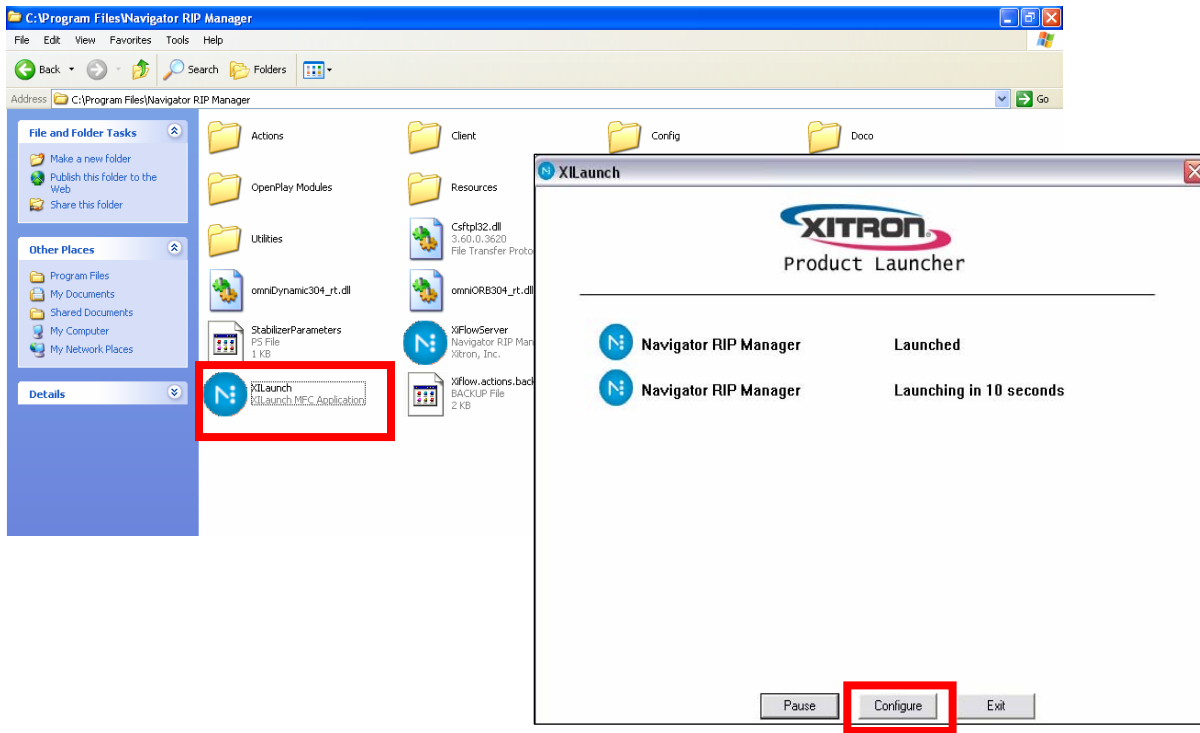
3. After the Server install completes, return to the NAVIGATOR RIP MANAGER install screen. **Select** the button next to RIP Utilities and click **Next**.



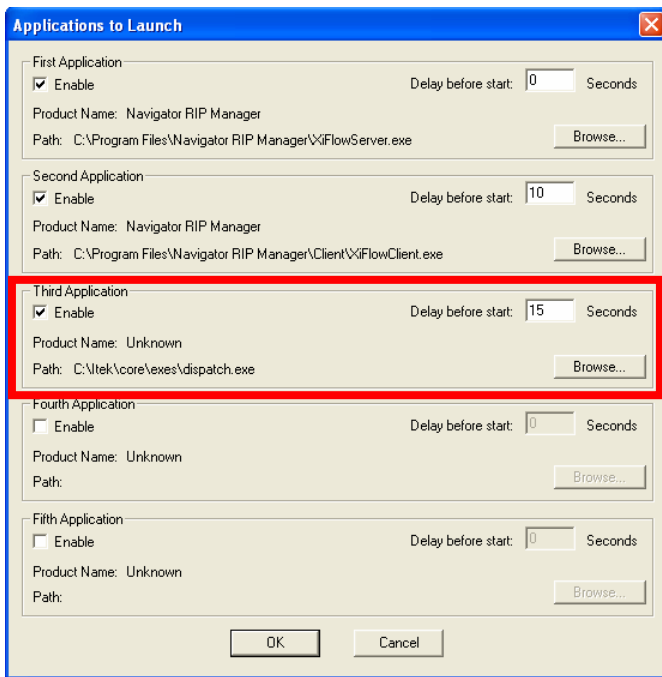
4. Choose the correct install path by clicking “**Browse.**” Direct the installer to the Momentum RIP folder and click **Next**. The installer will configure the files properly for the RIP.



5. Locate the application “XiLaunch” inside the Navigator RIP Manager folder. Its default location is C:\Program Files\Navigator RIP Manager. **Double-click** the icon to start the application and **IMMEDIATELY click** the configure button.

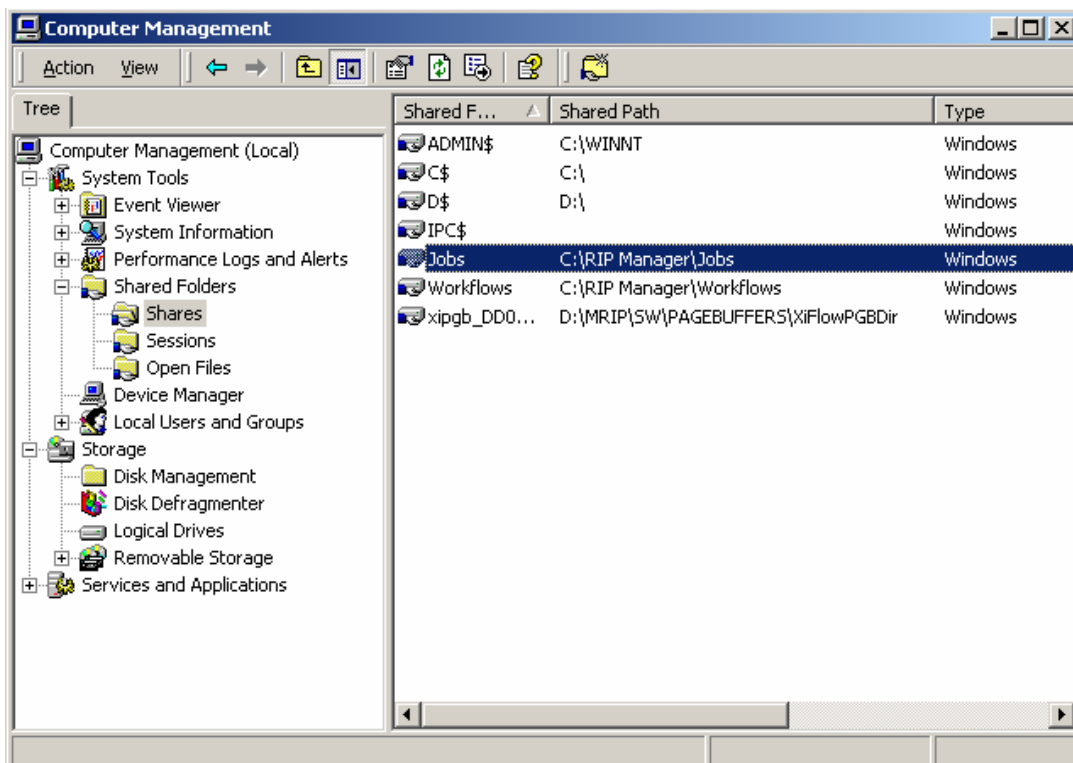


6. Select the box to enable the Third Application and browse to the location of the dispatch.exe, which launches the Momentum RIP and the Presstek tools. Proper configuration in this window will ensure that all applications will launch in the right order. The dispatch.exe file can *usually* be found in the \Itek\core\exes\directory. Enter 15 in the “Delay before start” entry as shown in the next illustration.



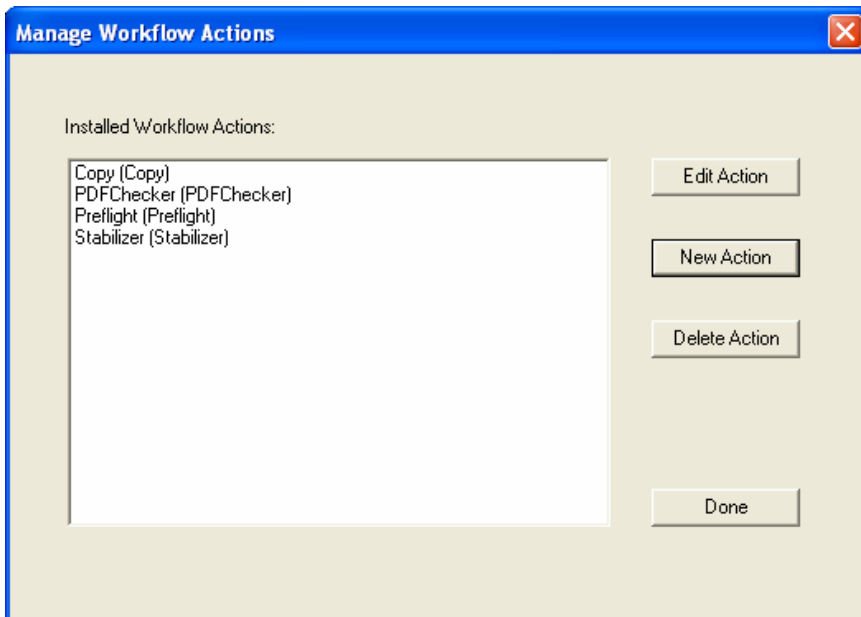
7. Finally, create an alias for the XiLaunch.exe application on the desktop. Starting XiLaunch.exe will now start all the RIP manager applications, the Momentum RIP, and RIP tools.

8. Verify the correct folders have been shared by **right-clicking** on the “My Computer icon;” select Manage and open the shared folders. **Select** “Shares” and verify the necessary components are shared as shown in the example below.



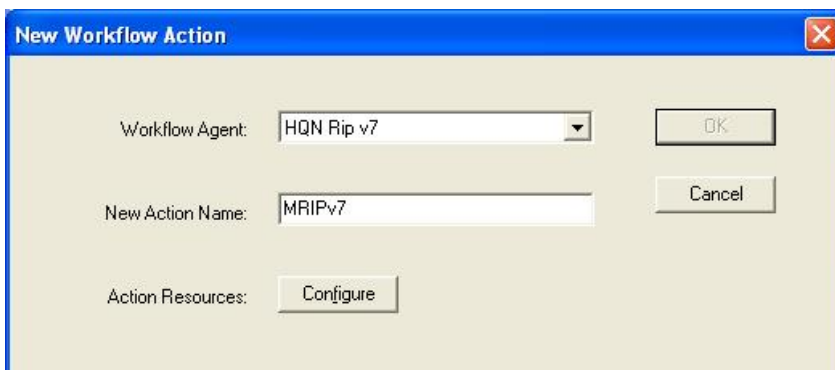
MANAGING RIP ACTIONS

RIP actions describe the individual steps or processes RIP Manager uses in the construction of workflows. For example, the HQN RIP Action is a basic action that describes the RIP portion of a RIP Manager system. Other actions are optional, and the choices shown in the dialogs will depend on the version of RIP Manager as well as the RIP Manager Options purchased. To configure Actions click on the Navigator RIP Manager Server located on the launch bar. Select the menu item Server Setup > Administrator Login. No password is required, click OK. Select the menu item Server Setup again > Manage Workflow Actions. The Manage Workflow Actions dialog will appear:

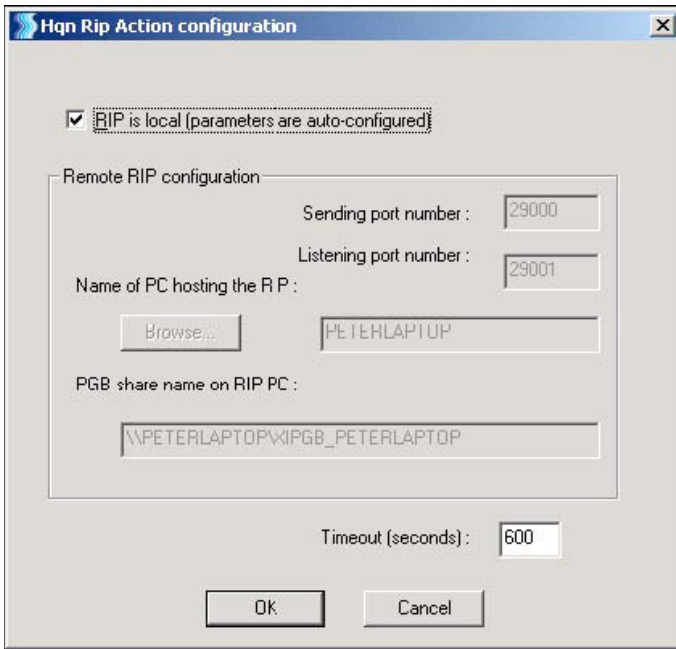


The installation creates several actions. You may wish to create more. Only configured Actions will be available for Users creating workflows.

From the Manage Workflow Actions Dialog, click New, select HQN Rip v7 from the Workflow Agent list, and name the Action similar to the example below. This is the name that users will see from their Client workstations when they build workflows, so choose a name that will be helpful to your users; especially if you have more than one RIP.

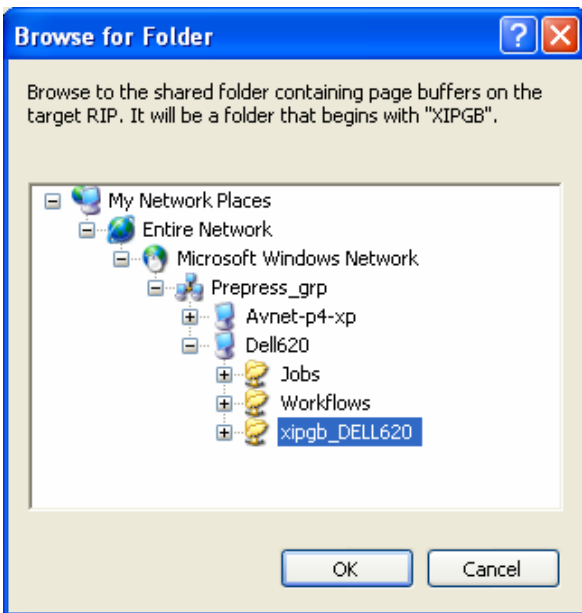


After setting the Agent and Name click Configure, the following dialog will appear:

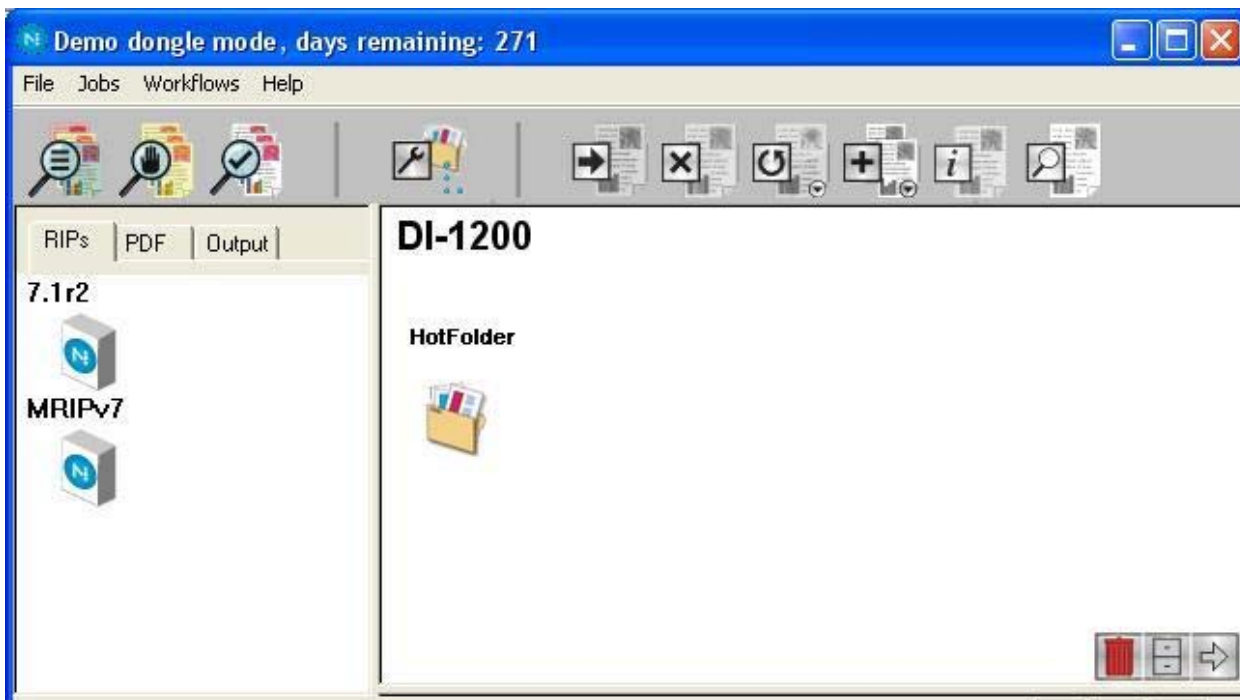


If you are connecting a RIP that is on the same PC as the RIP Manager Server, simply check the “RIP is Local” check box, click OK > OK. The Manage Workflow Actions Dialog box should indicate MRIPv7 (HQN Ripv7) is installed, click Done.

Note: If you are configuring a RIP Action for a RIP that is not on the same PC as the RIP Manager server, use the Browse button to locate the shared xipgb on the RIP computer located on the network as shown below:



Configuration is complete. When creating your first workflow in RIP Manager the MRIPv7 RIP icon should appear in the RIPs and Output tabs within RIP Manager's main window. In the example below, a new workflow named DI-1200 shows the available RIP actions.



For more information about setting up workflows and working with RIP Actions, Please download and view the RIP Manager Reference Manual at <http://www.xitron.com/ripmanagerdocu.htm>.